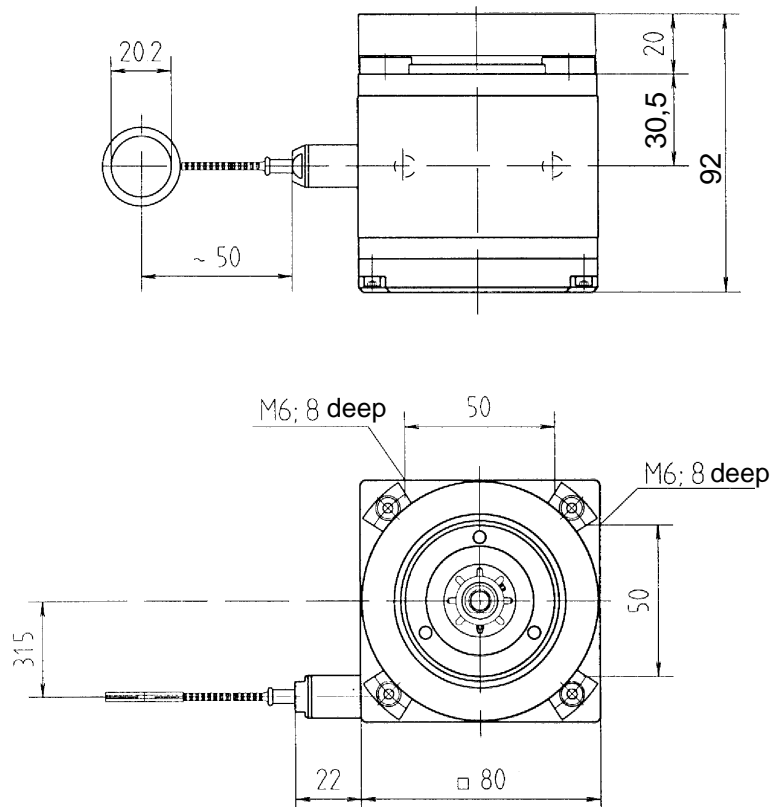


Technical Data

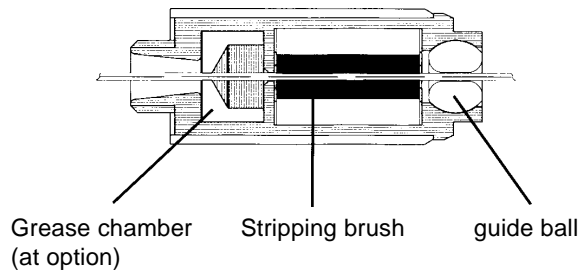
- Measuring range
Model SWH: 2 m
- Drum circumference
Model SWH: 200 mm
- Precision of measurement
±0.05 % in relation to the actual measured value
- Permissible cable speed : ≤ 4.0 m/s
- Permissible cable acceleration : ≤ 25 m/s² (at an operating temperature of 20°C)
- Force required to draw out the cable Start/end : max. 15 N / max. 30 N
- Cable material: high flexible, stainless steel, stranded wire
- Cable diameter : 1.35 mm
- Service life for cable and spring : ≥ 10 x 10⁶ cable strokes
- Housing material : anodized aluminium
- Working and storage temperature range :
- 20°C to + 85°C
- 30°C (at option)

Other technical data refer data sheet SWF10652.

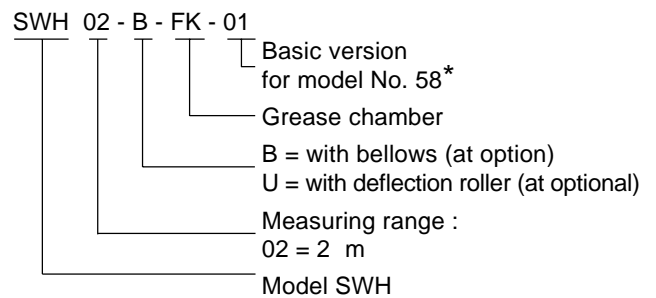
Dimensions in mm



Cable nozzle

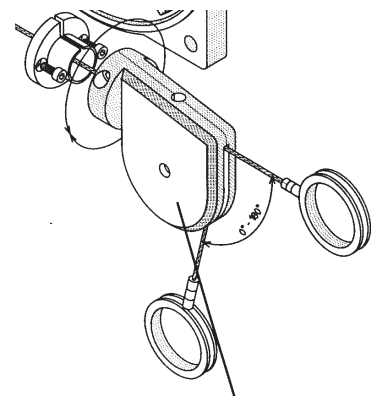


Order code format

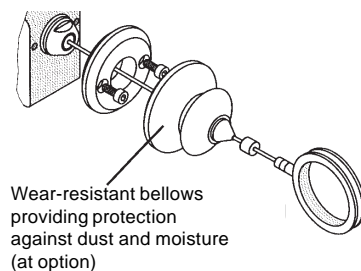


* Variations from the basic version are indicated with a succeeding, additional number and are documented in our works.

Accessory : Deflection roller SWF-U (refitable)



Refitable deflection roller for cable (at option)



Wear-resistant bellows providing protection against dust and moisture (at option)